

169th Listowel Agricultural Fair

July 17-20, 2025



AGRICULTURAL SOCIETY



AGRICULTURAL SOCIETY



Fences & Fields

Homecraft Advanced Prize List

www.listowelfair.com

@listowelfair

LISTOWEL AGRICULTURAL SOCIETY HOMECRAFT ADVANCED PRIZE LIST 2025

Thank you for picking up a Homecraft Advanced Prize List for the 169th Listowel Fair!

The fair dates are July 17 to 20, 2025

and our theme is

"Fences and Fields"

You are welcome to pick up an entry form and tags at Pins & Needles (177 Main St. W., Listowel, open Mon. to Fri. 9am to 5:30pm & Sat. 9am to 4:30pm), The Scrapbook Shop (163 Inkerman St W, Listowel, open Tues. to Fri. 11am to 5pm & Sat. 11am to 2pm) or just give us a call and we will be happy to mail it to you. We use the same exhibitor numbers year after year, so if you remember your number, you can use it. If you are new to exhibiting or cannot remember your exhibitor number, give us a call or email us (listowelfair@gmail.com) and we'll get you one! If you have any questions regarding the prize list, there is a committee chairperson listed at the top of each category. Please do not hesitate to contact them. They will be happy to help you.

Exhibits will be accepted Tuesday July 15 (7pm to 9pm) or Wednesday July 16 (8am to 11am). Judging will take place Wednesday, July 16 from 12:30pm to 5pm. The Agricultural Hall will be closed for judging and will be open to the public starting at 10am on Thursday, July 17, 2025.

Homecraft exhibits are to be picked up from the Agricultural Hall from 4:30pm-5:30pm on Sunday, July 20 or on Monday, July 21 between 10:30am to noon.

Your prize money will be mailed to you in August.

The Homecraft Contacts for the Agricultural Society are:

Marybelle Dittmer, 519-291-1390; Elizabeth Johnston, 519-291-0644; listowelfair@gmail.com

Thank you for your interest and support of the Listowel Agricultural Society. We look forward to seeing you and your exhibits at **the 169th Listowel Agricultural Fair!**

NEW THIS YEAR!

A membership (entry) fee of \$5 will be collected when dropping off exhibits at the Agricultural Hall. As a result of this, no membership fee will be deducted from prize winnings. Membership will run from July 2025 until July 2026. Youth ages 17 and under as well as anyone competing in the 4-H Lifeskills Competition are exempt from this fee.

The fee can be paid by cash, cheque, etransfer, debit or credit.

Entries can be submitted online ahead of time!

Entry forms can be submitted online starting June 1st, 2025 with entries accepted at the dates/times listed on the previous page. Find the entry form at:

<https://www.assistexpo.ca/listowel-agricultural-society>

Paper copy entry forms will also be accepted.

Instructions for submitting an entry form online AND/OR for entering a virtual competition:

1. Visit: <https://www.assistexpo.ca/listowel-agricultural-society>
2. Create a new exhibitor profile with your name and contact information (if you have exhibited in the past, your profile will be matched up with the exhibitor number you have used in previous years)
3. Click on 'Add Entry' (found at the top of the page)
4. Click on the sections/classes you want to enter
5. If entering a virtual competition, upload your photo
6. A summary page will appear. If you aren't done entering yet, click on 'Add Entry' at the top of the page.
7. To finalize your entries, click submit - you will receive an email confirmation of your entries. You can still add more entries to your exhibitor profile after this.
8. Please bring your confirmation with you when dropping off your items.

NOTE: if you have more than one person in your household entering in the Listowel Agricultural Fair, you can add them in under your profile by clicking on 'Add Exhibitor' at the top of the page.

VIRTUAL**PHOTOGRAPHY COMPETITION**

Chairperson: Tracey Fitton 519-292-6112 Tracey-Tracey@hotmail.com

Prize Money: 1st - \$5; 2nd - \$4; 3rd - \$3

Photography entries will be accepted online starting June 1st!

To enter visit: <https://www.assistexpo.ca/listowel-agricultural-society>

Details for entering online appear at the beginning of the Advanced Prize List.

The chairperson will be happy to help you if you need assistance with entering your photos online.

Amateur Photography Rules:

1. Submit ORIGINAL digital photo in preferably jpg, jpeg, png or tiff image format.
2. Amateurs only, no professionals.
3. One image per person per category, unless otherwise specified.
4. Photograph by exhibitor only, taken within the last 2 years (unless specified), and only exhibited for 1 year.
5. Photographs not suitable for family viewing will not be judged or displayed.
6. Committee decisions are FINAL - disqualified entries in open classes will not be displayed.
7. Photos will be judged on quality, clarity, originality and composition.
8. Photos will be put into a video to be shown during the duration of the fair and on social media and housed on the Listowel Fair YouTube channel.
9. Entrants agree to have their work displayed virtually and name in the local media.

OPEN TO ALL AGES – ONE PRINT ONLY

1. Listowel Fair 2024	12. Summertime Fun	23. Rocks (be creative!)
2. New Life	13. Fall Beauty	24. Children with Animals
3. Vintage	14. Winter Wonderland	25. Weather
4. Group of People	15. Old Building	26. Sunrise or Sunset
5. Feathered Friends	16. Place of Worship	27. Dominant Colour
6. Cloud Formations	17. First Responders	28. Sign
7. Laying Around	18. Field Crops	29. Fancy Food Plating
8. Reflections	19. Photobomb	30. Nail Art
9. Young Farmer(s) In Training	20. Lanes, Paths or Trails	31. Animals in a Field
10. Christmas	21. Chef's Creations	32. Fences
11. Spring Flowers	22. Garden / House Plants	33. Outstanding in his Field

OPEN TO ALL AGES – TWO PRINTS

34. Canadian Scenery	40. Things with Wings
35. Black & White ~ Photographers Choice	41. Things with Tails
36. Zoom In / Zoom Out	42. Child / Children Playing Outdoors
37. Start To Finish	43. Agriculture
38. Same Picture, Different Seasons	44. Tractors and/or Farm Equipment
39. Northern Lights	45. Fields to Forks

Special

Prize Money: 1st - \$10; 2nd - \$7; 3rd - \$5

46. Fences & Fields

SCRAPBOOKING, CARDBOOKING & PAPERWORKS

Co-Chairs: Alana McEachern 519-291-3993 thescrapbookshopca@gmail.com, Anne Laidlaw
mynameisannelaidlaw@yahoo.ca

Prizes: 1st \$5, 2nd \$4, 3rd \$3

SCRAPBOOKING & CARDBOOKING RULES:

1. No kits or computer generated scrapbook pages or cards accepted, unless requested.
2. All scrapbook pages **MUST** be mounted on a single page, except in 2 page layout categories. (No pocket-pages.)
3. Scrapbook pages must be 12"x12" and **MUST** be in protective sleeves.
4. Please do not send envelopes with the cards, unless requested.
5. Collections (more than one item) must come mounted on Bristol Board or Cardstock from exhibitor.
6. One entry per person, per category.
7. Amateurs can **ONLY** enter in the open and youth classes.
8. Professionals category is for storeowners, representatives, designers and professionals **ONLY**.
9. Committee decisions are final. Disqualified entries in open and professional classes will not be displayed.

SCRAPBOOKING

ONE PAGE LAYOUT Open to all ages	TWO PAGE LAYOUT (open to all ages) *must be taped or attached together*	Youth Scrapbooking Ages 15 & under
1. Fair Theme	5. Christmas (or other winter Celebration)	7. Fair Theme
2. Dominant Colour	6. Then and Now	8. A day in the life
3. First Day of School		
4. Last Year's Fair-One event		

CARDBOOKING

Open to all ages	Youth - Ages 15 & under	Professionals Only
1. Christmas Card	6. Humorous Card	8. Birthday Card
2. Humorous Card	7. Birthday Card	9. 3D or Pop up card
3. 3D or Pop up Card		
4. Sympathy Card		
5. Birthday Card		

PAPERWORKS USING SCRAPBOOK SUPPLIES

Open to all ages	Youth - Ages 15 & under	Professionals Only
1. Homemade Calendar	6. Paper Mosaic-Maximum of 12x12	8. Collection of 3 Christmas Tags
2. Collection of 3 Christmas Tags	7. Collection of 3 Christmas Tags	9. Paper ornaments-group of 3, must be hangable
3. Paper Mosaic - Maximum of 12x12		
4. 3D paper art-or origami		
5. Paper Ornaments-group of 3, must be hangable		

2025 Listowel Fair – Advanced Prize List

Fine Arts

NOTE: All items exhibited in Fine Arts must be listed on a separate entry form and brought to the Fine Arts area upon drop off. Any items not listed or not delivered prior to judging may be disqualified.

Committee Contact: Kathy Halliday (519-591-0568; kdhalliday33@gmail.com)

Prize Money: 1st - \$5, 2nd - \$4, 3rd - \$3

Preschool

1. Colour the picture provided – ‘F is for Fence’
2. Make a farm animal puppet using a brown paper lunch bag
3. Make a candy kebob. Display in a resealable plastic bag.
4. A collection of 6 stones displayed in half an egg carton (decorated as desired).

Junior/Senior Kindergarten (** please indicate JK or SK on entry tag **)

5. Finger Painting – Use a half sheet of Bristol board for your masterpiece. Put a fence in your picture.
6. Cut out pictures of food you like to eat and glue them on a paper plate.
7. Print ‘Fences and Fields’ on a 5”x7” piece of white paper.
8. Decorate a box of macaroni and cheese (Kraft Dinner or similar). Wrap the box in paper before decorating. Entries will be kept and donated to the local food bank.

Grade 1 & 2 (** please indicate grade 1 or grade 2 on entry tag **)

9. Collect 100 of the same item and display in a suitable plastic bottle.
10. Glue popsicle sticks on a piece of construction paper to make a fence. Cut pictures of animals out of magazines and glue on the paper to look like they are in a field behind the fence.
11. Print the words ‘Fences and Fields’, five (5) times on a lined sheet of 8 ½” x 11” paper
12. Use a cereal box to create a paper fish aquarium.

Grade 3 & 4

13. Make ‘slime’ and put it in a Ziploc bag. Include the recipe.
14. Decorate a pair of flip flops.
15. Write a 90-100 word story about what you’ll be doing when you’re 25 years old.
16. Plant a vegetable from a seed and watch it grow. Include a short story to tell what kind it is and how you planted it.

Grade 5 & 6

17. Decorate a large homemade cookie using the fair theme. (include cookie recipe)
18. Make a flower using items that have been recycled.
19. Decorate a clay pot. Plant an indoor plant in it.
20. Write a thank you card to give to a farmer.

Grade 7 & 8

21. Make a friendship bracelet. Display it on a 6”x6” piece of cardboard.
22. Make your favourite homemade candy. Display 6 pieces on a paper plate in a resealable plastic bag. (Please provide the recipe, handwritten.)
23. Create a 10cm x 30cm bumper sticker (hand drawn and coloured) promoting the Listowel Fair.
24. Write a letter to the Mayor to suggest something that could be done to help our community.

Amateur Artists

25. Pen and ink drawing on an 8 ½" x 11" piece of white paper. Scene to include a fence and a field.
26. Colouring – Picture provided.
27. An item of origami.
28. Painting on a glass item (not from a kit).
29. Acrylic Pour Painting – on a piece of canvas no larger than 8"x10".

Handicrafts

30. Hand crafted pet toy.
31. Decorate a reusable shopping bag.
32. Re-purposed cutlery. Be creative!
33. Refrigerator magnet, no bigger than 4".
34. Handcrafted charcuterie board.
35. Metal art.
36. Craft using pressed flowers.
37. A centrepiece for a Christmas dinner table.
38. Soap carving using a standard soap bar.
39. Homemade bath bomb or bath salts.
40. Make a craft item found online. Print the picture from the website and include it with your entry.

Antiques – prior to 1960 (** please include a short story about your entry **)

41. A road map.
42. A calendar.
43. A set of salt and pepper shakers.
44. A Queen Elizabeth souvenir.

Retro – 1960 – 1980 (** please include a short story about your entry **)

45. A sticker book/collection.
46. A magazine from the 80's.
47. An action figure.
48. A favourite VHS movie.
49. A piece of collectible glassware.
50. A Walkman.

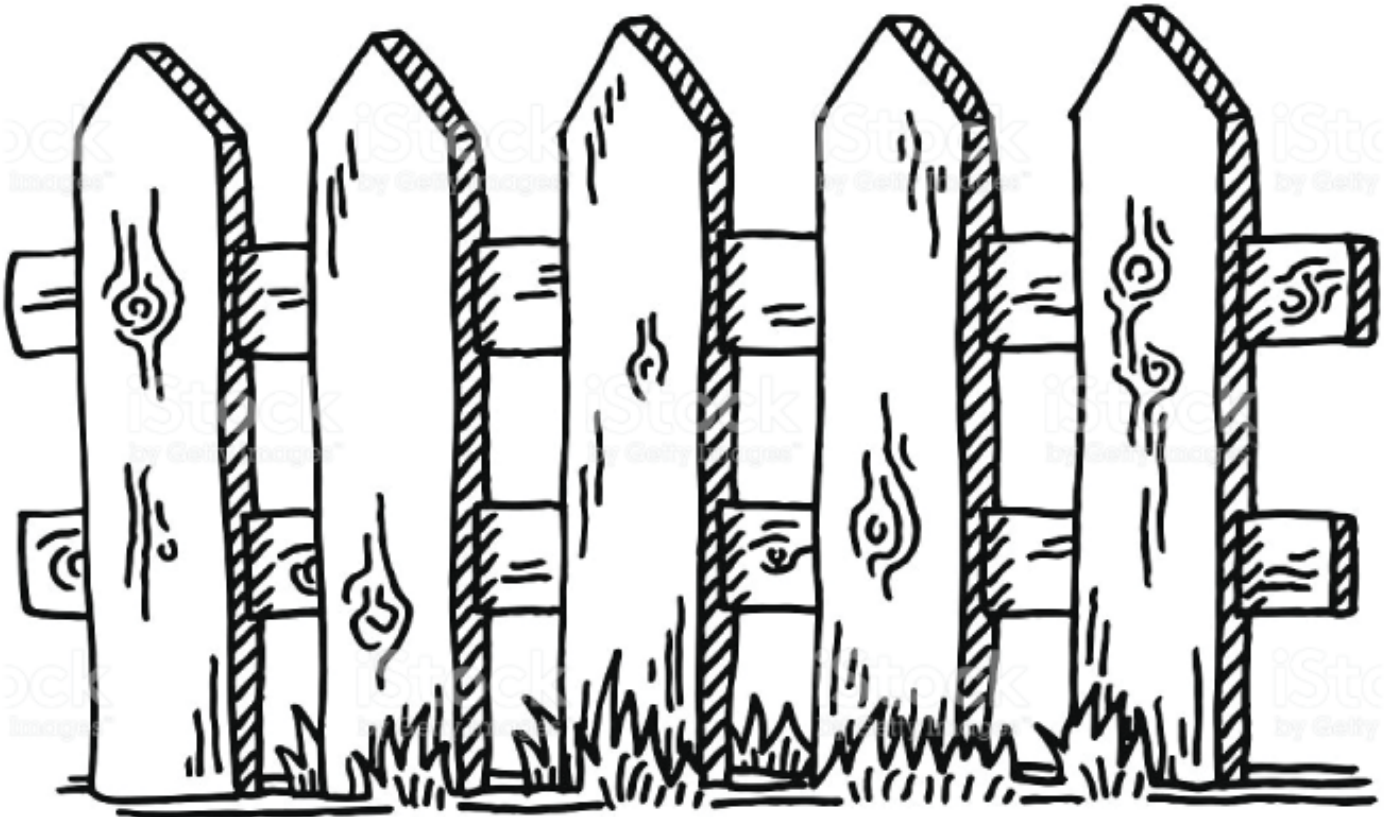
Senior Citizens (Open to ladies and gentlemen over 60 years of age. Preference given to new work.)

51. Penmanship – A letter to a loved one.
52. A collection of three different fruits and/or vegetables from your garden.
53. A gift wrapped parcel.
54. Any article of woodworking
55. An item made for your garden.
56. Your favourite cookbook and a short story about it.
57. Three tea biscuits packaged to share with a friend. (Please include recipe.)
58. A handmade gift for a new baby.

Ff

is for

Fence





PLANTS & CUT FLOWERS

Chairperson: Betty Bender, 291- 4603

Committee: Marlene McQuinn, Mary Kerr, Jan Chapman, Mary Foote, Pat Mayberry, Joyce Simpson, Carolyn Sturgeon, Paulette Coneybeare, Shelby Donegan

PLANTS & CUT FLOWERS RULES

1. Flowers in ALL classes must be HOME GROWN, established in suitable containers.
2. Any exhibit not worthy will not be awarded a prize.
3. At the discretion of the judge and the committee, a section may be subdivided.
4. Amateur exhibitors only! No entries from store owners, representatives, designers, professionals or anyone being paid for designing/growing plants.

****NEW CLASS FOR PROFESSIONALS ONLY****

HELPFUL HINTS FOR PREPARING MATERIALS

(Ontario Judging Standards for Horticultural & Floral Design)

1. Cut flowers and foliage the evening before the show or in the early morning.
2. Flowers stay fresher and show better if there are NO LEAVES in the container.
3. Make a fresh slanting cut at the end of stems, for maximum water intake.
4. Place in a wide bucket in deep *warm water*, preferably overnight.
5. Store in a dark, humid, draft-free place.
6. Some cut flowers, foliage and woody materials do not readily absorb water and require further treatment to prevent wilting. Woody branches may benefit from splitting cut ends and some need the thick outer layer removed as well. Some cut flowers (e.g., poppies) benefit from burning the stem ends while others benefit by placing stem ends in boiling water or from chemicals in the water. About 2 Tbsp. of glycerine in 4 L of water, or florist crystals may be beneficial. Details are also available in flower arranging books.
7. Removal of dust, stains, and any other foreign material from blooms and foliage enhances the exhibit.
8. Remove damaged foliage.
9. Re-cut stem ends before placing in show containers.

POTTED PLANTS

Note: ONLY THE PLANT LISTED should be in the container.

Pots/containers are considered in overall appearance.

Accessories are acceptable.

Prizes : 1st \$5.00 2nd \$4.00 3rd \$3.00

1. Shamrock plant
2. African Violet, SINGLE CROWN, any colour
3. Any kind of fern (asparagus fern is not a true fern)
4. Jade Plant

5. Philodendron, not over 20 in. high including pot
6. Tuberous begonia, in bloom, in pot
7. Baby tears, small leaves
8. Unlisted houseplant in bloom (NAMED IF KNOWN)
9. One or more varieties of succulent plants (includes cactus) in one container, not over 20 in. high including pot
10. Any kind of ivy
11. Unlisted house plant UNDER 12" (NAMED IF KNOWN)
12. Unlisted house plant OVER 12" (NAMED IF KNOWN)
13. Any variety of orchid
14. Common Snake Plant (Dracaena)
15. Plant growing in a medium other than soil (e.g. air plant)

CUT FLOWERS

Note: All cut flowers should be shown with own foliage.

Support in suitable container. Floral oasis should not be used. Glass beads, pin or glass frogs are allowed for support.

Aim for uniformity in height, flowers and leaves.

~ Bloom: An individual flower, one to a stem. A bud is considered a bloom.

~ Stem, Stalk or Scape: A plant structure carrying one or more flowers and/or buds. It may be branched e.g. sweet peas, iris

~ Spray: A portion of a plant with a number of flowers e.g. chrysanthemum, petunia, floribunda roses etc.

Prizes: 1st \$5.00 2nd \$4.00 3rd \$3.00

16. Hosta, 3 leaves each a different variety, 4" or less in width
17. Hosta, 3 leaves each a different variety, more than 4" in width
18. Perennials (unlisted), 3 stems one variety, OVER 15" high, including container, NAMED
19. Perennials (unlisted), 3 stems one variety, UNDER 15" high, including container, NAMED
20. Annuals (unlisted), 3 stems one variety, OVER 15" high, including container NAMED
21. Annuals (unlisted), 3 stems one variety, UNDER 15" high, including container NAMED
22. One variety of white daisies, 5 stems
23. One variety of double white daisies, 5 stems
24. One variety of daisies other than white, 5 stems
25. Calla Lily, 1 stem with leaf from same plant
26. Daylily, 1 scape (stem), orange blends with own foliage
27. Daylily, 1 scape(stem) any colour other than orange blends with own foliage
28. Bee Balm, 5 stems, red or pink
29. Bee Balm, 5 stems mauve or purple
30. Marigolds, French(small), 3 blooms with own foliage
31. Petunias, single, 1 SPRAY with own foliage

32. Hydrangea, one stem, white
33. Hydrangea, one stem, coloured
34. Tuberous Begonia, one bloom floating in an open bowl, NO foliage (must float and not touch sides of bowl)
35. Sweet Peas, best display
36. Pansies and/or viola with own foliage, best display
37. One flowering hosta stem with leaf from same plant
38. Rose, one bloom floating in an open bowl, NO foliage (must float and not touch sides of bowl)
39. Rose- Hybrid Tea, one stem in a vase with own foliage
40. One stem of a rose, any variety other than Hybrid Tea
41. Rose with best fragrance – one stem in a vase
42. Astilbe, three stems
43. Lilies, one stem, any shade of pink
44. Lilies, one stem, yellow or yellow blend
45. Lilies, one stem, white or white blend
46. Lilies, one stem, orange
47. Lilies, one stem, any colour not listed
48. Ornamental grass, five stems, same variety, under 30” including vase
49. One clematis bloom floating in a suitable container, NO foliage, (must float and not touch sides of container)

DESIGNS WITH PLANT MATERIAL

**NOTE: A design is a combination of fresh and/or dried plant materials and/or inorganic objects arranged to produce an artistic unit.
(Floral oasis may be used)**

Prizes: 1st \$10.00 2nd \$7.00 3rd \$5.00

50. “Good Things Grow in Ontario Fields” - Ontario fresh fruits and/or vegetables (may be purchased) featured in a design
51. “Fenced In” – any design not exceeding 12” in any direction
52. “Local Fields and Trails” - design using wayside plant material
53. “People Put Flowers in the Craziest Things”
54. “Solitaire”- design using one bloom
55. “Fun With Foliage”- design using only foliage in a variety of colours
56. “Greener Pastures”- all green design
57. “Think Outside the Fence”- your own creation
58. “Field of Dreams” - design using local crops e.g. corn, beans, wheat
59. “Tiny Tim” - a miniature design not exceeding 5” in any direction
60. “Every Farmer Needs a Break” - arrangement in a mug
61. “Once Around Your Own Back Yard” - a bouquet in a vase

PLANTERS AND HANGERS

Plants must be growing in containers.

Prizes: 1st \$10.00 2nd \$7.00 3rd \$5.00

62. Flowering hanging planter – Minimum size container 10 in.
63. Foliage hanging planter (no flowers) – Minimum size container 10 in.
64. Patio Container with mixed plants
65. Succulents (hens & chickens, cacti etc.) growing in a novel container with accessories
66. Pot of 2 or more growing herbs
67. Fibrous Begonia-any number/colour growing in a container
68. Coleus Plant Collection-1 or more varieties
69. Any container filled with one or more colours of ONLY impatiens

SPECIALS

70. FAIR THEME SPECIAL – A design interpreting the theme “Fences and Fields”

1st - \$50 gift certificate from Fletcher’s Landscaping

2nd - \$25 gift certificate from Listowel Florist

3rd - \$25 gift certificate from Zehrs Food Plus, Listowel

71. MEMORIAL DESIGN - In memory of Marg Cleland, “Remembering in White”
Sponsored by Pauline and Richard Boertien

1st - \$10 2nd - \$8.00 3rd - \$7.00

72. MEMORIAL DESIGN - In memory of Doris Van Camp, “Inside the Garden Gate”

-your interpretation

Sponsored by James and Margaret Van Camp

1st-\$10.00 2nd-\$ 8.00 3rd - \$7.00

73. MEMORIAL - In memory of Verna Coneybeare, “Motoring Around the Fields”
– design featuring a farm vehicle

Sponsored by James Coneybeare

1st- \$10.00 2nd - \$8.00 3rd - \$7.00

JUDGE’S CHOICE AWARD #1

MEMORIAL - In memory of Mac Thompson - \$25 Judges choice from entries in
“Designs with Plant Material” - \$25

Sponsored by Phyllis Thompson

JUDGE’S CHOICE AWARD #2

\$25 Gift Certificate from “Victorian Inn & Spa on Main”

Judge’s choice from entries in “Cut Flowers”

SPECIAL ACHIEVEMENT AWARD – For most points in Potted Plants and Cut Flowers

1st - \$50.00 gift certificate from Riverbend Gardens & Nursery

2nd - \$25.00 gift certificate from Zehrs Food Plus (Listowel)

SPECIAL ACHIEVEMENT AWARD – For most points in Floral Designs and Planters & Hangers

1st - \$25.00 gift certificate from Listowel Greenhouses

2nd - \$25.00 gift certificate from Watson's Home Hardware, Listowel

****NEW CLASS - PROFESSIONALS ONLY****

DESIGN WILL NOT BE JUDGED, BUT WILL BE DISPLAYED. PLEASE INCLUDE YOUR NAME AND NAME OF BUSINESS.

PLANT MATERIAL MAY BE PURCHASED.

A design demonstrating your interpretation of the theme “Fences and Fields”

*Thank you to all of our sponsors of Special Classes!
We also appreciate the additional donation of prize money from
Watson's Home Hardware, Listowel, towards the
Plants and Cut Flowers Competition.*



4-H Competition!



Open to current 4-H members only.

**Win prize money to help pay for your 2026 4-H membership fee!
No entry fee! 1st \$5; 2nd \$4, 3rd \$3**

Competitors are to use their Listowel Fair competitor number.

If the 4-H youth is new to exhibiting in the Agricultural Hall, a number will be assigned at registration.

Please present 4-H membership card at registration.

Classes 1-8 are open to all 4-H youth (9-21 yrs old). Classes 9-14 are open to Cloverbud participants only.

A youth does not necessarily have to have participated in a project on the topic in each category to be eligible to compete.

Only one entry per 4-H youth per class allowed.

Item should not have been previously shown at the Listowel Fair.

Please specify age of competitor on entry tag. If a class has more than six entries, the class will be divided into Junior (9-13 yrs. old) and Intermediate/Senior (14-21 yrs. old).

Entries will be accepted on Tuesday, July 15th (7pm-9pm) or Wednesday, July 16th (8am-11am).

Judging will take place Wednesday, July 16th from 12:30pm to 5pm. During this time, the Agricultural Hall will be closed to the public. Entries are to be picked up on Sunday, July 20th (4:30-5:30pm) or Monday,

July 21st (10:30am-12pm). *Your prize money will be mailed to you in August.*

Any questions? E-mail: listowelfair@gmail.com

Contact Leasa Skinner, 519-807-8306, leasaskinner@gmail.com

Elizabeth Johnston, 519-291-0644 or Tracey Fitton, 519-292-6112

1. Any knitted or crocheted article.
2. Any 4-H project made of fabric.
3. Any craft completed in a 4-H club.
4. Create a collage of pictures showing a 4-H activity/club meeting/trip or exchange. Entry to be no bigger than a ½ sheet of Bristol board.
5. Create a greeting card for any occasion.
6. Recipe card, handwritten, with your favourite soup recipe.
7. Any 4-H woodworking project.
8. Any 4-H project not listed above.

Cloverbud 4-H Competition!

Open to current 4-H Cloverbud participants only (6-8 years old)

9. Colour a picture from Year One of the Cloverbud Manual.
10. Create a collage using magazine/newspaper/brochure pictures of farm machinery. Entry to be no bigger than a ½ sheet of Bristol board.
11. Create your choice of a musical instrument (page 163 of the Year One Cloverbud manual).
12. Using grocery store flyers, create a collage of items made with milk. Entry to be no bigger than a ½ sheet of Bristol board.
13. Create an egg carton pig (page 191 of the Year One Cloverbud manual).
14. Any Cloverbud project not listed.

CULINARY ARTS

CHAIRPERSON: Marilyn Whaley 519-291-7504

COMMITTEE: Robina Alexander, Marybelle Dittmer, Brooklyn Hern,
Natalie Whaley, Jessica Lago

RULES AND REGULATIONS

All articles of food are to be sealed in clean Ziploc bags. No glass plates. Bread to be made previous to first day of fair. Paper liners are permitted **but should be removed** when exhibiting muffins. All cakes to be set on foil-covered cardboard (no mixes). Put labels on jams, jellies and pickles. Put in mason jar no larger than 500 ml sealed with Bernardin lids. Exhibitor tags to be attached to jars in Jam, Jellies and Pickles using elastics.

NOTE: regarding buns and rolls - buns are joined and rolls are baked singly.

All prize money in Sections 1 to 44

1st \$8.00, 2nd \$6.00, 3rd \$5.00

YEAST BREADS

1. Loaf of white bread, homemade
2. Loaf of 60% whole wheat bread, homemade
3. Loaf of raisin bread, homemade
4. Loaf of multigrain bread made in a breadmaker
5. Buns, plain, joined (3)
6. Rolls, plain (3)
7. Cheese buns, joined (3)
8. Chelsea buns, plain, joined (3)

QUICK BREADS

9. Rhubarb muffins (3)
10. Any muffins made with fruit, labelled (3)
11. Tea biscuits, plain (3)
12. Lemon loaf (half loaf)
13. Banana loaf (half loaf)

COOKIES

14. Oatmeal raisin cookies (3)
15. Peanut butter cookies (3)
16. Ginger cookies (3)
17. Brownies, plain, no icing, no nuts (3)
18. No bake squares (3) (No rice krispie squares)

CAKES AND PASTRY

19. SPECIAL – see ad on this page - Carrot cake, iced (8” square)
20. Chocolate cake, single layer, iced (4” square)
21. Date squares (3)
22. Maple fudge (3)
23. Dutch apple pie - exhibit ¼ of the pie on a suitable paper plate
24. Cream puffs/eclairs (3)
25. Butter tarts with raisins (3)

JAMS, JELLIES & PICKLES

26. Strawberry jam, cooked

JUDGE'S CHOICE

Judge's Choice of Best Loaf of Bread in Classes #1-4

Winner receives a bag of flour

*Sponsored by Red Door Milling,
Bluevale, ON*

MEMORIAL SPECIAL – CLASS #19 CARROT CAKE

In Memory of Charlene (Bender) Hayden

Class #19 – Carrot Cake, iced, 8” square
Sponsor to receive a piece of the 1st place cake

1st - \$25

2nd - \$15

3rd - \$10

Sponsored by Ken & Everdina Bender

27. Strawberry jam, freezer
28. Strawberry rhubarb jam, cooked
29. Rhubarb jam, cooked
30. Raspberry jam, cooked
31. Two fruit jam, labeled
32. Any other freezer jam not listed, labelled
33. Any other cooked jam/jelly not listed, labelled
34. Any savory jelly, labelled
35. Icicle pickles (one pint)
36. 7 or 9 day pickles (one pint)
37. Bread and butter pickles (one pint)
38. Dill Pickles (one pint)
39. Pickled beets (one pint)
40. Chili sauce (one pint)
41. Any other pickle, not listed, labelled
42. Any relish, labelled
43. Salsa sauce, mild (one pint)
44. Pasta sauce, no meat (one pint)

45. PERTH WATERLOO EGG PRODUCERS

Prizes

- 45a. Pickled Eggs, 1 pint
- 45b. Boiled salad dressing using eggs, 1 cup
- 45c. Rice pudding with raisins, 1 cup in clear plastic container with lid

46. LISTOWEL BANNER SPECIAL

- 46a. Best pan of baked squares 9x13. We will retain a small square for exhibit and the Banner receives the squares which must be baked in a foil pan.
- 46b. Cookies (26) (whatever kind you choose) To be exhibited in a suitable container retained by sponsor. Sponsor receives 2 dozen cookies and 2 cookies are kept for display. Prize for each class is a one-year subscription to the Listowel Banner.

47. HOOVER'S MAPLE SYRUP SPECIAL

- Granola made using maple syrup, 1 cup in a ziploc bag (recipe included)
 Prize: 1st, 2nd and 3rd - maple syrup

48. GAY LEA FOODS

- Shortbread cookies, plain using Gay Lea butter (3)
 Prize: 1st, 2nd and 3rd prizes

HEMOCRAFT SPECIALS

49. Loaf of sourdough bread
50. Rice Krispies used in a non-traditional way.
51. Cookie mix in a mason jar, dry ingredients only, recipe included, judged on appearance only
52. Chocolate bark (3 pieces)

OAAS SPECIALS

- 53. Butter tarts without fruit (3)
- 54. Chocolate Chip cookie competition (3)
 - Open to youth up to 15 yrs old (as of Dec. 31/24)
- 55. Maple syrup
- 56. Honey

The winners of Classes 53 to 56 are eligible to enter at the District 8 Annual Meeting competition. The winner at the district is eligible to compete at the provincial level.

JUNIOR CULINARY

Prize Money: 1st - \$6; 2nd - \$5; 3rd - \$4

No entry fee. Open to youth up to and including 16 years old.

Please include the age of the exhibitor on the tag.

To be shown in ziploc bags. NO saran wrap permitted.

- 1. Brownies (3)
- 2. Confetti squares (3)
- 3. Ice cream cone decorated to look like a Christmas tree, totally edible
- 4. Your favourite after school snack, appropriately displayed and in a ziploc bag
- 5. Cookie mix in a mason jar, dry ingredients only, recipe included, judged on appearance only

Special!

Exhibitor with most points in Junior Culinary Classes 1-5 - \$5

Junior Specials

- 6. Candy kabobs, 1 on a suitable plate in a ziploc bag
 - 7. Trail mix, 1 cup in a Ziploc bag
- Prizes to be determined

BUTTER TART COMPETITION

(no fruit, no nuts)



Rules

1. Please review the General Competition Rules document.
2. Entry must be made solely by the person entering the competition. (including the pastry).
3. Number of butter tarts to be shown at local fair/exhibition to be determined by each individual fair/exhibition.

District Competition

1. A total of 6 tarts will be required to be shown. Tarts must be on a clean, sturdy plate (no paper plates) inside of a clear plastic bag with the exhibitor's name, mailing address and fair represented.
2. The size of the tarts must be full size tarts. (no mini or bite size tarts) and must not contain fruit or nuts (ie. no raisins, no pecans).
3. If the exhibitor has won at more than one fair, the one closest to the exhibitor's home address is the agricultural society from which the entry will be sent to the district competition. The other agricultural societies may send their second place winner into the district competition. An exhibitor may only enter into one district competition.

Provincial Competition

1. A total of 6 tarts will be required to be shown. Tarts must be on a clean, sturdy plate (no paper plates) inside of a clear plastic bag with the exhibitor's name, mailing address and district represented.
2. The size of the tarts must be full size tarts. (no mini or bite size tarts) and must not contain fruit or nuts (ie. no raisins, no pecans).
3. 1st and 2nd place entries will not be returned to exhibitor but will be placed up for auction at the convention.

Provincial Prize Money – 1st - \$50.00 2nd - \$30.00 3rd - \$20.00

Prizes donated by Gay Lea Foods Co-operative

Judging Standard

- 20** General Appearance
- 40** Crust
- 40** Filling

Rules for 2025 Fairs & 2026 Convention

LIQUID HONEY COMPETITION

Pure, Ontario #1, White



Rules:

Please review the General Competition Rules document.

Exhibitors of honey must be registered beekeepers and the exhibits shown by them must be pure honey from floral sources in their apiaries.

Entry must be made solely by the person or family entering the competition. The entries at the fair level, district level and provincial level must be from the same batch.

District Competition

1. Liquid Honey exhibits shall consist of one (1) clear glass container, having a capacity of 500 grams (375 ml).
2. Each agricultural society is entitled to send their best of show to the district competition.
3. If the exhibitor has won at more than one fair, the one closest to the exhibitor's home address is the agricultural society from which the entry will be sent to the district competition. The other agricultural societies may send their second place winner into the district competition. An exhibitor may only enter into one district competition.
4. The OAAS will award a ribbon to exhibitors of winning entries at each district competition.

Provincial Competition

1. Liquid Honey exhibits shall consist of two clear glass containers, each having a capacity of 500 grams (375 ml).
2. Entries must be labelled on the **BOTTOM** of the containers only with a supplied entry number or identifier. No other labels will be permitted.
3. Any honey entry containing any form of foreign material will be disqualified from the competition.
4. Honey will be judged using the standards printed in the *OAAS Agriculture & Horticulture Judging Standards for Ontario Fairs*. An approved colorimeter will be used to assess the colour.
5. 1st and 2nd place entries will be placed up for auction at the convention.

Judging Standards

Appearance – 45 points	Clarity 45 points	Containers 10 points
15 Density (moisture content)	15 Free from crystals	5 Pleasant appearance, of equal size and shape
10 Brightness	15 Free from pollen, wax, etc.	
10 Flavour and aroma	15 Free from air bubbles, either in suspension or as froth	5 Uniform level of fill
5 Uniformity of honey		
5 Colour		

Provincial Prize Money – 1st - \$50.00, 2nd - \$30.00, 3rd - \$20.00

Sponsored by the Ontario Beekeepers' Association

MAPLE SYRUP COMPETITION

Pure Maple Syrup, Canada Grade A – Amber.



Rules:

Please review the General Competition Rules document.

Entry must be made solely by the person or family entering the competition. The entries at the fair level, district level and provincial level must be from the same batch.

District Competition

Maple syrup exhibits shall consist of one (1) curved Kent style glass bottle (D&G #505188 Syrup Bottle with Handle), or equivalent, of Maple Syrup, Canada Grade A - Amber, having a capacity of 250 mL.

Each agricultural society is entitled to send their best of show to the district competition.

If the exhibitor has won at more than one fair, the one closest to the exhibitor's home address is the agricultural society from which the entry will be sent to the district competition. The other agricultural societies may send their second place winner into the district competition. An exhibitor may only enter into one district competition.

The OAAS will award a ribbon to exhibitors of winning entries at each district competition.

Provincial Competition

Maple syrup exhibits shall consist of two (2) curved Kent style glass bottles (D&G #505188 Syrup Bottle with Handle), or equivalent, of Maple Syrup, Canada Grade A - Amber, each having a capacity of 250 mL.

Entries must be labelled on the BOTTOM of the containers only with a supplied entry number or identifier. No other labels will be permitted.

All maple syrup should have a flavour characteristic of its respective colour class and be free from any objectionable odour or taste. It is best to sample from the same lot before submitting your entries to the OAAS.

Any maple syrup entry containing any form of foreign material will be disqualified from the competition.

Maple syrup will be judged using the standards published by the OAAS in *Agriculture & Horticulture Judging Standards for Ontario Fairs*. An approved maple syrup colorimeter will be used to assess the colour.

1st and 2nd place entries will be placed up for auction at the convention. Other entries will be returned.

Judging Standards

40 points - Flavour

30 points - Density

20 points - Colour

10 points - Clarity

Provincial Prize Money – 1st - \$50.00, 2nd - \$30.00, 3rd - \$20.00

PLAIN CHOCOLATE CHIP COOKIE COMPETITION

(no nuts)



Rules

1. Please review the General Competition Rules document.
2. Competition is open to youth up to age 15 years (as of December 31 of current year) of member societies of the OAAS.
3. Number of cookies to be shown at local fair/exhibition to be determined by each individual fair/exhibition.

District Competition

1. District entry must consist of 6 cookies displayed on a clean, sturdy plate (no paper plates) inside of a clear plastic bag with the exhibitor's name, mailing address and fair represented.
2. Plain chocolate chip cookies, with no nuts, must be no larger than 2.5" (6.5 cm) and no smaller than 2" (5 cm).
3. If the exhibitor has won at more than one fair, the one closest to the exhibitor's home address is the agricultural society from which the entry will be sent to the district competition. The other agricultural societies may send their second place winner into the district competition. An exhibitor may only enter into one district competition.

Provincial Competition

4. The entry for the district must consist of 6 cookies displayed on a clean, sturdy plate (no paper plates) inside of a clear plastic bag with the exhibitor's name, mailing address and district represented.
5. Plain chocolate chip cookies, with no nuts are to be no larger than 2.5" (6.5 cm) and no smaller than 2" (5 cm).

Provincial Prize Money: 1st - \$20.00 2nd - \$15.00 3rd - \$10.00

Judging Standard

- | | |
|----|---------------------------------|
| 25 | General Appearance |
| 25 | Internal Appearance and Texture |
| 50 | Flavour |

2025 Listowel Fair

Baby Show



IN PERSON IN 2025!!

Saturday, July 19th, starting at 9:30am

(please see class times below)

Baby Show will take place in the tent beside the Agricultural Hall.

Show Information

- No cost to enter
- Child's age is as of July 19, 2025
- Each entry will receive a title (e.g. baby with the biggest smile, curliest hair, biggest eyes)
- Each entry will receive a certificate and a ribbon
- By participating you are consenting to possibly having your child's name, title and possibly picture in the local newspaper and/or social media
- For more information contact Brooklyn at 519-291-8467



The Categories!

1. Girl 0-6 months old (9:30am)
2. Boy 0-6 months old (10am)
3. Multiple Births, 0-6 months old (10:25am)
4. Girl 7-12 months old (10:30am)
5. Boy 7-12 months old (11am)
6. Multiple Births, 7-12 months old (10:55am)



SEWING AND NEEDLEWORK

Chairperson: Nora Verkley 519-356-2527

Committee: Karen Dolson, Pat Hogerwaard, Susan Knabenschuh, Marion Knoblauch, Bonna May, Brenda Mayes, Kathy McMillan, Donna Mitchell, Linda Robertson, Melanie VanWinden

Note: This section requires a separate entry form from the Quilting Section

Please Note:

- Only one article per person in each class.
- Entries must be the work of the exhibitor.
- New, up-to-date articles will be given preference.
- Please do not show items more than two years in a row.
- Judges have been authorized to disqualify all soiled or old work.
- Please place completed fair tag with a safety pin to the top left corner of item before entering it in the Fair.
- Please cover labels on the back of the item.

Sewing and Needlework

Prizes for Classes 1 to 54

1st ~ \$8.00, 2nd ~ \$6.00, 3rd ~ \$5.00

- 1 Fair Theme Item
- 2 Four Identical Napkins
- 3 Pet Accessories or outfit
- 4 Cosmetic Bag
- 5 Pillowcase
- 6 Counted Cross Stitch
- 7 Christmas Stocking
- 8 Table Runner
- 9 Cloth handbag or backpack
- 10 Small Wheelchair lap quilt, max. 33"x36" size, this item will be donated to local charity
- 11 Embroidered article- judged on workmanship
- 12 Sewn home décor item, under 36 "
- 13 Wool appliqued item
- 14 Child's apron for crafting or cooking
- 15 A sewn item using geometric design
- 16 Sleep pants
- 17 An item of child's clothing
- 18 Fibre art article using modern techniques
- 19 Sewn article made with recycled material
- 20 Placemats- two
- 21 Shopping bag- multi use
- 22 Sewn Wallet

- 23 Pillow- any dimension
- 24 Microwave Bowl Holder
- 25 Machine Embroidered item
- 26 Rope Bowl
- 27 Wall hanging
- 28 Sewn item celebrating Canada Day
- 29 Christmas Fabric Centerpiece
- 30 Halloween Sewn item
- 31 Autumn table runner

Knitted Section

- 32 Child Hat
- 33 Adult Hat or Headband
- 34 Afghan
- 35 Slippers
- 36 Mittens
- 37 Scarf Or Cowl
- 38 Child Sweater
- 39 Adult Sweater
- 40 Any Item Not Listed Above

Crocheted Section

- 41 Animal Toy
- 42 Adult Or Child Hat
- 43 Three Christmas Ornaments
- 44 Three "Poppies" - To Be Donated After Fair (pattern available in this package, on the Listowel Fair website www.listowelfair.com or at Spinrite (230 Elma St. W., Listowel))
- 45 Stove Towel with Crochet Topped
- 46 Afghan
- 47 Any Item Not Listed Above

Senior Citizen- over 60

- 48 Knitted or Crocheted Scarf or hat- child or adult
- 49 Knitted or Crocheted sweater or cardigan- child or adult
- 50 Knitted Socks
- 51 Counted Cross Stitch or Embroidery Item
- 52 Afghan- crocheted or knitted

Youth Corner ** No entry Fee **

- 53 Knit or Crocheted item
- 54 Any sewn item

REMEMBRANCE REFLECTION

A commemorative community project

Crocheted Poppy pattern

Crochet abbreviations: Ch: chain(s) | Dc: double crochet | Sc = single crochet | Sl st = slip stitch | (12) = indicates number of stitches at end of round

Materials required:

- 17-20 yards of any bright poppy red worsted weight (#4) yarn and 2 yards of the same type in black (Bernat Berry or Red Heart Supersaver in Cherry Red)
- Knitting needle: size 5 mm
- Crochet hook: size 5.0 mm/J (needle or hook size may be adjusted but finished poppy should be between 4-6 inches in diameter)



Row 1: With black, Ch 3, do not join. Do 11 dc into the last chain from hook. Sl st into top of Ch 3 (counts as dc). Ch 1 and pull yarn through.

Row 2: Change to red. Join to the top of any of black dc. Ch 3, work in 1 dc in same st. Work 2 dc into each dc across making sure you do not create an extra stitch out of the join from the black row. Join with sl st to top of ch 3. You have 24 dc in total. Do not turn.

Row 3: Ch 3, work 1 dc in same stitch. Work 2 dc in each of the next 3 dc, (8 dc group) *sc into each of the next 2 dc, 2 dc in each of the next 4 dc*. Repeat from * to * ending with the 2 sc and joining with a sl st into the Ch 3 at the beginning of the row. 4 sets of (8 dc + 2 sc). Do not turn.

Row 4: Ch 3, work 1 dc in same stitch. Work 2 dc into each of the next 7 dc, *sl st between the 2 sc of the previous row. Work 2 dc in each of the next 8 dc*. Repeat from * to * 3 times. Sl st between the sc of the previous row. Sl st to the top of sc 3. 4 sets of 16 dc with sl st between. Pull yarn through loop and cut to tie off.

Crochet pattern designed by Hania Wojtowicz and edited by Susan

Simms. For more information contact listowelfair@gmail.com

www.listowelfair.com



QUILTING

Chairperson: Nora Verkley 519-356-2527

Committee: Karen Dolson, Pat Hogerwaard, Susan Knabenschuh, Marion Knoblauch, Bonna May, Brenda Mayes, Kathy McMillan, Donna Mitchell, Linda Robertson, Melanie VanWinden

Note: this section requires a separate entry form from the Sewing and Needlework section.

Please Note:

- Only one article per person in each class.
- Entries must be the work of the exhibitor.
- New, up-to-date articles will be given preference.
- Please do not show items more than two years in a row.
- Judges have been authorized to disqualify all soiled or old work.
- Please place completed fair tag with a safety pin to the top left corner of item before entering it in the Fair.
- Please cover labels on the back of the item.

If Exhibitor does not agree for their quilt to go forward to OAAS for further judging upon winning, you must make note on your entry tag. (Sections A#1 and 2, C#19 and 20, D# 30 and 31)

Prizes for Classes 1 to 49 1st ~ \$8.00, 2nd ~ \$6.00, 3rd ~ \$5.00

Long Arm (Section A)

Item Created and Quilted by Exhibitor

1. Quilt - machine or hand appliqued and or embroidered, 324" and over
2. Quilt - pieced, 324" and over
3. Quilt - under 324"
4. Lap Quilt
5. Child or Teen quilt
6. Baby or Crib Quilt
7. Christmas Quilt
8. Table Runner
9. Wall Hanging

Long Arm (Section B)

Item Created by Exhibitor and Quilted by another (Long Armed).

Recognize Quilter by name on Entry Tag

Judging based on creation of quilt

10. Quilt - machine or hand appliqued and or embroidered, 324" and over
11. Quilt - pieced, 324" and over
12. Quilt - under 324"
13. Lap Quilt
14. Child or Teen Quilt
15. Baby or Crib Quilt
16. Christmas Quilt
17. Table Runner
18. Wall Hanging

Domestic Machine (Section C)

Item created by Exhibitor and Quilted by Exhibitor

19. Quilt - machine or hand appliqued and or embroidered, 324" and over
20. Quilt - pieced, 324" and over
21. Quilt under 324"
22. Lap Quilt
23. Child or Teen Quilt
24. Baby or Crib Quilt
25. Mini Quilt - 48" and under
26. Quilt as you Quilt
27. Table Runner
28. Wall Hanging

Hand Quilting (Section D)

29. Quilt - hand appliqued or embroidered, 324" and over
30. Quilt - pieced, 324" and over
31. Quilt - under 324" 32. Lap Quilt
33. Baby or child quilt
34. Mini Quilt - 48" and under
35. Quilt created by exhibitor and hand quilted by another
36. Big Stitch quilting on any size quilt
37. Table Runner
38. Wall Hanging

Assorted Quilts (Section E)

39. Quilt panel, any size
40. Quilt, machine quilted any technique by two or more people
41. Quilt, any size, any other technique not listed
42. Bargello item
43. Quilt completed by an organization or group

Seniors (Section F) - over 60 years old

44. Baby or Crib Quilt
45. Quilt any size
46. Table Runner
47. Wall Hanging

Youth Corner ** No entry fee **

48. Table Runner
49. Quilt any size

Quilting Specials

*** Quilt, pieced and long arm or domestic machine quilted by exhibitor, 324" and over**

(Sections A#1, A#2, C#19, C#20)

OAAS Rules for Judging

Sponsored by Quilt Jeannie

*** Quilt, hand quilted, 324" and over**

(Sections D#30, D#31)

OAAS Rules for Judging

Sponsored by Pins and Needles

*** Quilt, pieced by exhibitor and long arm quilted by another**

(Sections B#10, B#11, B#12)

Sponsored by E and E Cloth and Creations

*** Committee Special - Wall Hanging**

Sponsored by the Listowel Agricultural Fair Homecraft Committee

*** Memorial - *In Memory of Verna Coneybear***

*** Baby/ Child Quilt**

(Sections A#6, B#15, C#25, D#31, F# 45)

*** Best Of Show - Special**

Sponsored by Country Quilting

HAND QUILTED QUILT COMPETITION



Rules:

1. Please review the General Competition Rules document.
2. The quilt must be solely made, and hand quilted by the exhibitor and exhibited and judged at a local Ontario Association of Agricultural Societies (OAAS) fair to be eligible for this competition.
3. Quilts to be measured on the perimeter. Total perimeter measurement to be a minimum of 324 inches. Note the quilt can be square, rectangular etc. All 4 sides must be measured to determine the perimeter measurement.
4. The quilting must be through all 3 layers (top, batting and back) and not be mounted on a frame. The quilt may have a sleeve attached to the back for the purpose of hanging the quilt.
5. The winning OAAS Hand Quilt will not be eligible to compete in any future OAAS fair, district and/or provincial competitions.
6. It is the exhibitor's responsibility to give credit to the original designer of the quilt pattern based on copyright rules.

District Competition

7. Each local fair is entitled to send their best of show of all eligible hand quilts to the district competition.
8. If the fair's best of show hand quilt has won at more than one fair, the exhibitor must consider their own agricultural society as the one from which the quilt will be sent to the district meeting, otherwise it should be sent from the agricultural society nearest his/her home address. The other fairs at which this quilt was entered and won, may enter their second best of show hand quilt into the district competition.
9. An exhibitor who wins more than one best of show title with different hand quilts at different fairs is entitled to enter each winning quilt in the district competition.
10. If an exhibitor is exhibiting in more than one district, they are entitled to enter different winning quilts at different district competitions but cannot enter the same quilt at more than one district competition.
11. The OAAS will award a ribbon to exhibitors of winning hand quilts at each district competition.
12. A photo of the top three placed hand quilts at the district competition must accompany the "OAAS Championship Quilt Entry Form"

Provincial Competition

13. A \$500.00 GRAND PRIZE and rosette will be awarded. The exhibitor will retain ownership of the quilt.
14. A \$100 RESERVE GRAND PRIZE will be awarded. The exhibitor will retain ownership of the quilt.

Judging Standards

- | | |
|----|-----------------------------|
| 25 | General Appearance & Design |
| 20 | Colour & Materials |
| 55 | Workmanship |
| 30 | Quilting |
| 10 | Borders |
| 15 | Binding and Picots |

MACHINE QUILTED COMPETITION



Rules:

1. Please review the General Competition Rules document.
2. The quilt must be solely made, and machine quilted by the exhibitor and exhibited and judged at a local Ontario Association of Agricultural Societies (OAAS) fair to be eligible for this competition.
3. Quilts to be measured on the perimeter. Total perimeter measurement to be a minimum of 324 inches. Note the quilt can be square, rectangular etc. All 4 sides must be measured to determine the perimeter measurement.
4. The quilting must be through all 3 layers (top, batting and back) and not be mounted on a frame. The quilt may have a sleeve attached to the back for the purpose of hanging the quilt.
5. The winning OAAS Machine Quilt will not be eligible to compete in any future OAAS fair, district and/or provincial competitions.
6. It is the exhibitor's responsibility to give credit to the original designer of the quilt pattern based on copyright rules.
7. The use of domestic, mid arm and/or long arm equipment is permitted on hand or computer guided machine quilt entries.

District Competition

1. Each local fair is entitled to send their best of show of all eligible machine quilts to the district competition.
2. If the fair's best of show machine quilt classes has won at more than one fair, the exhibitor must consider their own agricultural society as the one from which the quilt will be sent to the district meeting, otherwise it should be sent from the agricultural society nearest his/her home address. The other fairs at which this quilt was entered and won, may enter their second best of show machine quilt in the district competition.
3. An exhibitor who wins more than one best of show title with different machine quilts at different fairs is entitled to enter each winning quilt in the district competition.
4. If an exhibitor is exhibiting in more than one district, they are entitled to enter different winning quilts at different district competitions but cannot enter the same quilt at more than one district competition.
5. The OAAS will award a ribbon to exhibitors of winning machine quilts at each district competition.
6. A photo of the top three placed machine quilts at the district competition must accompany the "OAAS Championship Quilt Entry Form"

Provincial Competition

7. All quilts entered in the competition must be machine quilted.
8. A \$500.00 GRAND PRIZE and rosette will be awarded. The exhibitor will retain ownership of the quilt.
9. A \$100 RESERVE GRAND PRIZE will be awarded. The exhibitor will retain ownership of the quilt.

Judging Standards

- | | |
|----|-----------------------------|
| 25 | General Appearance & Design |
| 20 | Colour & Materials |
| 55 | Workmanship |
| 30 | Quilting |
| 10 | Borders |
| 15 | Binding and Picots |

Youth Poster Competition



Contact: Elizabeth Johnston, 519-291-0644; Tracey Fitton, 519-292-6112

Three Classes:

- A) Junior - Youth up to & including Grade 4
- B) Intermediate - Youth Grade 5 to Grade 8
- C) Senior - Youth Grade 9 to 12

Criteria for youth poster classes:

Must be an original hand made (hand drawn) design.

Must include the name and dates of the **Listowel Fair (July 17-20, 2025)**.

Must also include Fair Theme slogan '**Fences and Fields**' highlighting the crops and livestock grown in this area as well as our rural way of life.

Poster Size: Minimum 22cm X 28cm to a Maximum 28cm X 44cm, **without border.**

Entries are not to be mounted on artcard or Bristol board. The winning entry in each category will be mounted by the Listowel Agricultural Society before competing at the District level.

On the back of each poster please include the following:

Student/Entrant name, grade level and full name of school/home-school.



Judging Criteria

- 1) Overall appearance: 50 points
- 2) Hand Drawn : 35 points
- 3) Criteria (size, material, theme): 15 points

The winning poster from each class will compete at the District 8 competition.

Prizes for each class: 1st \$15; 2nd \$10; 3rd \$5

Judging of the posters will take place on July 16, 2025 from 12pm to 5pm.

Youth Poster Competition sponsored in memory of Ruth Robinson

Listowel Fair School Work Competition!



Contact Person: Elizabeth Johnston 291-0644; listowelfair@gmail.com;
Committee: Carolyn van der Heiden, Tracey Fitton, Marybelle Dittmer, Nancy Schildroth, Alana McEachern
Prize Money for all classes: 1st, \$3; 2nd, \$2; 3rd, \$1; Except murals; 1st, \$10; 2nd, \$8; 3rd, \$6.
School work will be picked up from the schools by Monday, June 23, 2025 and will be judged on Monday, June 30, 2025. Home-school entries are welcome! Listowel Fair will make every effort to display all entries; however, if display area is limited, only prize-winning entries will be displayed.
Name of school must appear on entry tag.

Special: The school with the most prize-winning entries will receive \$100!

Child Care & Nursery School

Class AD

Make a paper bag puppet that looks like a farm animal. Colour and decorate the puppet using a variety of craft supplies.

Class DD

Colour the picture provided labeled for Class DD. Please include the age of the child on the back of the picture.

Class E1 (Child Care & Nursery School)

On large mural paper write the words '**Fences & Fields**' (the theme of the 2025 Listowel Fair) highlighting the crops and livestock grown in this area as well as our rural way of life. Have the students decorate the mural using different materials, patterns and designs to depict the theme. Mural to be a maximum of 10 feet long. One entry per class allowed.

Junior Kindergarten



Class AJK

Using a small (6 or 7 inch) paper plate, create a barnyard animal. Colour, paint or decorate the animal using a variety of craft supplies.

Class BJK

Print your first name on a blank 5"X7" paper.

Class CJK Draw a picture of a crop that is grown in this area and label, in French, the name of the crop using an 8 1/2" x 11" piece of paper.

Class DJK

Colour the picture provided labeled for Class DJK.

Senior Kindergarten

Class ASK

Using old magazines, cut out and create a collage of tractors and farm equipment on an 8 1/2" x 11" sheet of paper.

Class BSK

Print your school's name on a blank 5"X7" paper

Class CSK Draw a picture of a crop that is grown in this area and label, in French, the name of the crop using an 8 1/2" x 11" piece of paper.

Class DSK

Colour the picture provided labeled for Class DSK.



Class E2 (JK & SK)

On large mural paper write the words '**Fences & Fields**' (the theme of the 2025 Listowel Fair) highlighting the crops and livestock grown in this area as well as our rural way of life. Have the students decorate the mural using different materials, patterns and designs to depict the theme. Mural to be a maximum of 10 feet long. One entry per class allowed.

Grade One

Class A1

Using paper no larger than 8 1/2" x 11", create a "shape outline of a vehicle" using geometric shapes, mounted on black construction paper.



Class B1 Print the following poem on lined paper.

The Seed

*Plant me in the earth
Give me water each day
I'll grow to be a crop
While you play*

Class C1 Draw and label, in French, two crops that are grown in this area, using an 8 1/2" x 11" piece of paper.

Class D1 Colour the picture provided labeled for Class D1.

Class E3 (Grades 1 & 2)

On large mural paper write the words '**Fences & Fields**' (the theme of the 2025 Listowel Fair) highlighting the crops and livestock grown in this area as well as our rural way of life. Have the students decorate the mural using different materials, patterns and designs to depict the theme. Mural to be a maximum of 10 feet long. One entry per class allowed.



Class B9 (OPEN TO ANY GRADE): Cursive writing.

Entrants can write out any existing poem on lined paper. Poem to be 16 to 24 lines long and should be related to the theme of the fair. Topics can focus on anything related to farming, food grown in this area, agricultural fairs or the rural way of life. Use your imagination!

Grade Two



Class A2

Using two small (6 or 7 inch) paper plates, create a unique fish. Colour, cut, paint, glue and decorate the fish using a variety of craft supplies, keeping in mind that glitter and heavier items may not stay on when the fish are being transported. A maximum of 2 paper plates may be used to complete this task.

Class B2 Print the following poem on lined paper.

The Giving Farm

*Hens give eggs.
Pigs give ham.
Cows give milk.
Strawberries give jam.
Bees give honey.
Goats give cheese.
Farms give food.
I'd like some please.*

By Vicki Witcher

Class C2 Draw and label, in French, two crops that are grown in this area, using an 8 1/2" x 11" piece of paper.

Class D2 Colour the picture provided labeled for Class D2.

Class E3 (Grades 1 & 2)

On large mural paper write the words '**Fences & Fields**' (the theme of the 2025 Listowel Fair) highlighting the crops and livestock grown in this area as well as our rural way of life. Have the students decorate the mural using different materials, patterns and designs to depict the theme. Mural to be a maximum of 10 feet long. One entry per class allowed.



Grade Three

Class A3

Create a paper mosaic initial. Using their first initial, have students use carefully cut complimentary colours. Creations may be mounted on any colour of paper. Maximum size of paper to be 8 1/2" x 11".



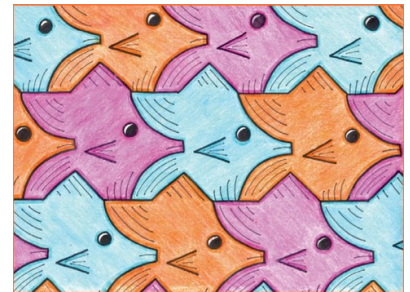
Class B3 Print the following poem on lined paper.

The Farm

*I see bunnies hopping
I hear birds chirping in the trees
I smell alfalfa growing in the field
I taste vegetables growing in the garden
I see cattle in the field eating grass
The barns for the cattle, pigs, chickens,
goats and sheep stand stately
I see the farm tractor working in the field
I watch the farmer as he grows our food
This food will feed the world including
you and I*

Class C3 Draw and label, in French, three crops that are grown in this area, using an 8 1/2" x 11" piece of paper.

Class D3 Make and colour a picture showing tessellations. Size is to be approximately 8 1/2" x 11".



Class E4 (Grades 3 & 4)

On large mural paper write the words '**Fences & Fields**' (the theme of the 2025 Listowel Fair) highlighting the crops and livestock grown in this area as well as our rural way of life. Have students decorate the mural using different materials, patterns and designs to depict the theme. Mural to be a maximum of 10 feet long. One entry per class allowed.

Grade Four

Class A4

Using the template provided labeled Class A4, create a 'My Emotions Wheel.'



Class B4

Print the following poem on lined paper.

Our Farmers, Our Future

*Farmers are important,
They're working all day long.
Every Canadian will go hungry,
If something does go wrong.*

*Farmers grow our fruit and veg,
Raise sheep and cattle too.
A farmer's life is hard,
There's a lot of work to do.*

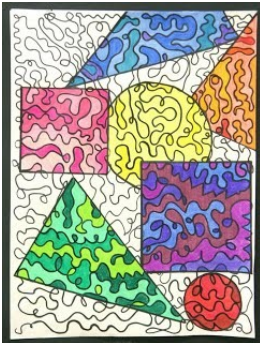
*When harvest time comes
And the crops are ripe and ready,
The farmer picks and sells his crops,
Keeping the supply full and steady.*

*Our farmers are our future,
Without them there is no hope.
So let's appreciate them,
And how they help us cope.*

By Erica Graham

Class C4

Using an 8 1/2" x 11" piece of paper, draw and colour "Un jardin potager" (A vegetable garden) title and label four items in French.



Class D4

Create a one line continuous art project. Use at least four different polygons (e.g. triangle, rectangle, square, hexagon, circle, etc.) in your design.

Class E4 (Grades 3 & 4)

On large mural paper write the words 'Fences & Fields' (the theme of the 2025 Listowel Fair) highlighting the crops and livestock grown in this area as well as our rural way of life. Have students decorate the mural using different materials, patterns and designs to depict the theme. Mural to be a maximum of 10 feet long. One entry per class allowed.

Class B9 (OPEN TO ANY GRADE):

Cursive writing. Entrants can write out any existing poem on lined paper. Poem to be 16 to 24 lines long and should be related to the theme of the fair. Topics can focus on anything related to farming, food grown in this area, agricultural fairs or the rural way of life. Use your imagination!

Grade Five

Class A5

Draw your first name only in Graffiti art using whichever size of piece of paper is required for the length of your name.



Class B5

Print the following poem on lined paper.

Farming Technology

*Farming has been around
Ever since time began*

*The technique has been remarkable
Different methods to work the land*

*We have come a very long way
From the horse and plows, you know
Changing slowly through the years
Modern pictures sure make it so*

*They were designed to take a swath
Wide and smooth and clean
From a field that goes for miles
As far as the eye has seen*

*Don't you think they're beautiful?
These modern day tractors and such
Astonishing their sizes are
They have that 'farming' touch*

*But I suppose new technology
Has to grow as time moves on
Because of the enormous population
The horse and plow couldn't last for long!*

By Marilyn Lott

Class C5 Using an 8 1/2" x 11" piece of paper, Draw and colour "Le machines de la ferme" (machines on the farm) title and label five items in French.

Class D5 Create a self identity through tracing. Using 11" x 17" paper, have students trace both their feet and hands on the page. Have them make a self portrait, creating the remaining body and facial expressions.



Grade Six

Class A6

Create a Q-Tip Dot Art picture of a scene found in North Perth. Create on 8 1/2" x 11" paper.



Class B6

Print the following poem on lined paper.

Golden Wheat Fields

*Driving down that red dirt road
I take a deep gulp of air
Ah yes, I love those wheat fields
Any worries will quickly repair*

*Huge machines ready to work
And to reap that golden land
The crops are ripe and ready to cut
With the massive combine head*

*Workers sweat and toil in the sun
From early morning till dark
Then up again when the dew is gone
They have that farmer's spark*

*The bales are huge and round
All rolled with an impressive machine
Just the way they like them
Yep, those bales are a farmer's dream*

*If you ever get a chance
Watch those people as they work
All things will come into balance
As they labour in that dirt!*

Class C6 Using a 8 1/2" x 11" piece of paper, create a drawing that looks like a picture taken by a drone in the sky looking down on a farm. Label, in French, at least five things the drone saw on the ground.

Class D6

Create an inspirational hand doodle. Have students trace their hand and then add lines and motivational messages, words of motivation or simply the Character Attributes throughout. The attributes can be found at: <http://www.northperthcoc.com/attributes.html>



Class E5 (Grades 5 & 6)

On large mural paper write the words 'Fences & Fields' (the theme of the 2025 Listowel Fair) highlighting the crops and livestock grown in this area as well as our rural way of life. Have students decorate the mural using different materials, patterns and designs to depict the theme. Mural to be a maximum of 10 feet long. One entry per class allowed.

Class B9 (OPEN TO ANY GRADE): Cursive writing. Entrants can write out any existing poem on lined paper. Poem to be 16 to 24 lines long and should be related to the theme of the fair. Topics can focus on anything related to farming, food grown in this area, agricultural fairs or the rural way of life. Use your imagination!

Grade Seven

Class A7

Create a pointillism art picture on an 8 1/2" x 11" page. Picture can be of farming, nature or a landmark in North Perth.



Class B7 Print the following poem on lined paper.

Dedicated to the Farmers of the World

*This poem is dedicated to the farmers of the world,
Who have worked hard to focus their energy that swirled,
To supply us with food through hard work and dedication,
For without their effort most would die of starvation,*

*An ancient art of farming dates back to prehistoric times,
That has developed even further over many lifetimes,
Farming has built the foundation of every civilization,
For without farming there could not be a single nation,*

*Raising crops, poultry, and livestock is not an easy task,
Working for hours under the scorching sun these farmers bask,
Raising orchards and vineyards with the resources at hand,
Using skills and technology to enhance their own farmland,*

*These hard working agriculturists should be given more appreciation,
Because without them we could not have evolved into a nation,
They keep civilization in existence, they enable us to survive,
Without farmers, most of us would not be alive!*

By Daya Nandan

Class C7 Using a 8 1/2" x 11" piece of paper, create an artistic display using one of the French interjections below:

- * Attention!
- * Silence!
- * Brrr!
- * Bravo!
- * D'accord!
- * or one of your own choosing



Entry must be hand drawn.

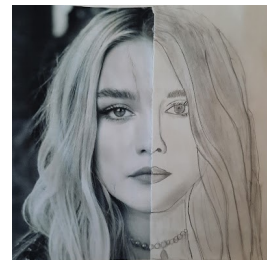
Class D7 Using the word "Google", create a google doodle on an 8 1/2" x 11" paper. Entry must be hand drawn.



Grade Eight

Class A8

Create a split picture by cutting a 5" x 7" photo of yourself in half and then recreate the missing half. The completed picture should be mounted on 8 1/2" x 11" paper (Bristol board, cardstock or construction paper). Picture used can be a photocopy.



Class B8 Print the following poem on lined paper.

Harvest Celebration

*Completion of the harvest, is a time to celebrate,
Leaves on trees are yellowing, around the whole estate,
Barns and bins are full to bursting, for winter now is here,
In olden days it was the same, to grow still takes a year.*

*A lot more hand work then, more men worked upon the land,
Ploughed with horses an acre a day, seed was sown by hand,
Good rotation of all the crops, kept most weeds at bay,
At harvest stood sheaves up in stooks, for two church bells they must stay.*

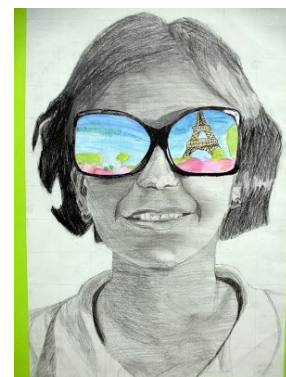
*Into bays or ricks were built, threshed out as needed through the year,
Wheat went to the mill to be ground, flour for bread we do revere,
Oats to feed the cattle and horses, and some for porridge bound,
To feed the men and families who, work on the land all year round.*

*Mechanized now and fewer people, but crops still grow the same,
Sunshine and warmth in the spring, showers to grow good crops the aim,
In nature nothing really changes, seasons come and go,
To keep us on the land we all love, its food for everyone we grow.*



Class C8 Using a 8 1/2" x 11" piece of paper, create a poster/ad "en Francais" promoting the Listowel Fair, highlighting the many events that take place throughout the weekend.

Class D8 Create a shades of summer poster. Draw a "selfie" with sunglasses projecting the thing you're most looking forward to in summer. Create your poster on paper no larger than 11" x 17".



Class E6 (Grades 7 & 8)

On large mural paper write the words 'Fences & Fields' (the theme of the 2025 Listowel Fair) highlighting the crops and livestock grown in this area as well as our rural way of life. Have students decorate the mural using different materials, patterns and designs to depict the theme. Mural to be a maximum of 10 feet long. One entry per class allowed.



AGRICULTURAL SOCIETY

Farm Safety Youth Competition!

Contact Person: Elizabeth Johnston 291-0644; listowelfair@gmail.com;

Committee: Carolyn van der Heiden, Tracey Fitton, Marybelle Dittmer, Nancy Schildroth, Alana McEachern
Prize money will be provided by the Listowel Agricultural Society.

1st - \$5; 2nd - \$3; 3rd - \$2

School work will be picked up from the schools by Monday, June 23, 2025 and will be judged on Monday, June 30, 2025. Home-school entries welcome! Listowel Fair will make every effort to display all entries; however, if display area is limited, only prize-winning entries will be displayed.

Name of school must appear on entry tag.

Class F: Farm Safety

Class FSJK (Junior Kindergarten):

Colour the picture of the cat provided, labeled Class FSJK. Trace the word cat at the top of the page.

Class FSSK (Senior Kindergarten):

Colour the picture of the dog provided, labeled Class FSSK. Print the word 'dog' on the line at the top of the page.



Class FS1 (Gr. 1) Animal Safety:

Connect the dots and colour the animal on the page labeled Class FS1. Print, in your own printing, the following message at the bottom of the picture: "Be careful around horses or other animals on the farm and at the fair."

Class FS2 (Gr. 2) Farm Safety:

Complete the wordsearch and figure out the secret farm safety message using the page labeled Class FS2.



Class FS3 (Gr. 3) Sun Safety:

Using a variety of art materials, design a t-shirt to wear in the sun, using the work page labeled Class FS3. Include a message on the shirt showing the importance of wearing a shirt when in the sun.



Class FS4 (Gr. 4) Fire Safety:

On a blank 8 1/2" X 11" sheet of paper, draw a fire escape plan for your home. Show the location of fire extinguishers and smoke alarms.

Class FS5 (Gr. 5) Farm Safety:

Using the worksheet labeled FS5, complete the crossword puzzle. Entries will be judged on completeness of puzzle, accuracy and neatness of printing for the answers.

Class FS6 (Gr. 6) Safety:

Using a blank piece of 11" x 14" paper, create a farm safety poster on a topic of your choice. Include a message warning of the danger of the activity and what should be done to do the activity safely. Or, poster could focus on the mental health struggles that come with farming and tips for coping and where to find help.

Class FS7 (students with special needs):

Using a blank 8 1/2" X 11" sheet of paper, make a picture of any safety topic. (a child can enter this category even if they are in a regular classroom).

2025 Listowel Fair

Ambassador Competition

Thursday, July 17, 2025
at the Grandstands following the
parade & Opening Ceremonies.



Fences & Fields

Eligibility/Rules

1. Competitors must be single and must be 17 years of age by August 10, 2025.
2. The Ambassador must attend the "OAAS Fair Convention" in February of 2026 in Toronto, the District 8 Ambassador Competition in May of 2026 and the "Ambassador of the Fairs Competition" at the CNE in August of 2026.
3. In addition to attending the above events, it is hoped that the Fair Ambassador will attend as many Listowel Agricultural Society functions as possible during their 2025-26 reign. The Agricultural Society would like to see the Ambassador take this opportunity to be both a youth representative of the Ag. Society as well as provide the organization with a youth liaison.
4. All competitors are asked to volunteer for the duration of the 2025 Listowel Fair.
5. Competitors must have been involved with the Listowel Fair in the past in some aspect.
6. The judges' decision is final.

Competition Expectations:

- Interview (Thursday afternoon, July 17/25)
- Ride in Opening Night Parade
- Speech (topics to be determined closer to the competition date)
- Impromptu Speech



Competitors need not come from a farm but should have some agricultural knowledge and must be capable of representing the rural, farm aspect of our community.

Applications are available from Elizabeth Johnston, (Ph. 519-291-0644 or e-mail: listowelfair@gmail.com) & are due back by **Monday, June 23, 2025.**

Ambassador Competition Co-Chairs - Stephanie Robertson, 519-807-4525 & Elizabeth Johnston
Committee - Alanna Coneybeare, Brooklyn Hern, Karlee Desormeaux,
Mary Fizell, Vanessa Kloostra, Hayleigh Royce, Lexi Johnston